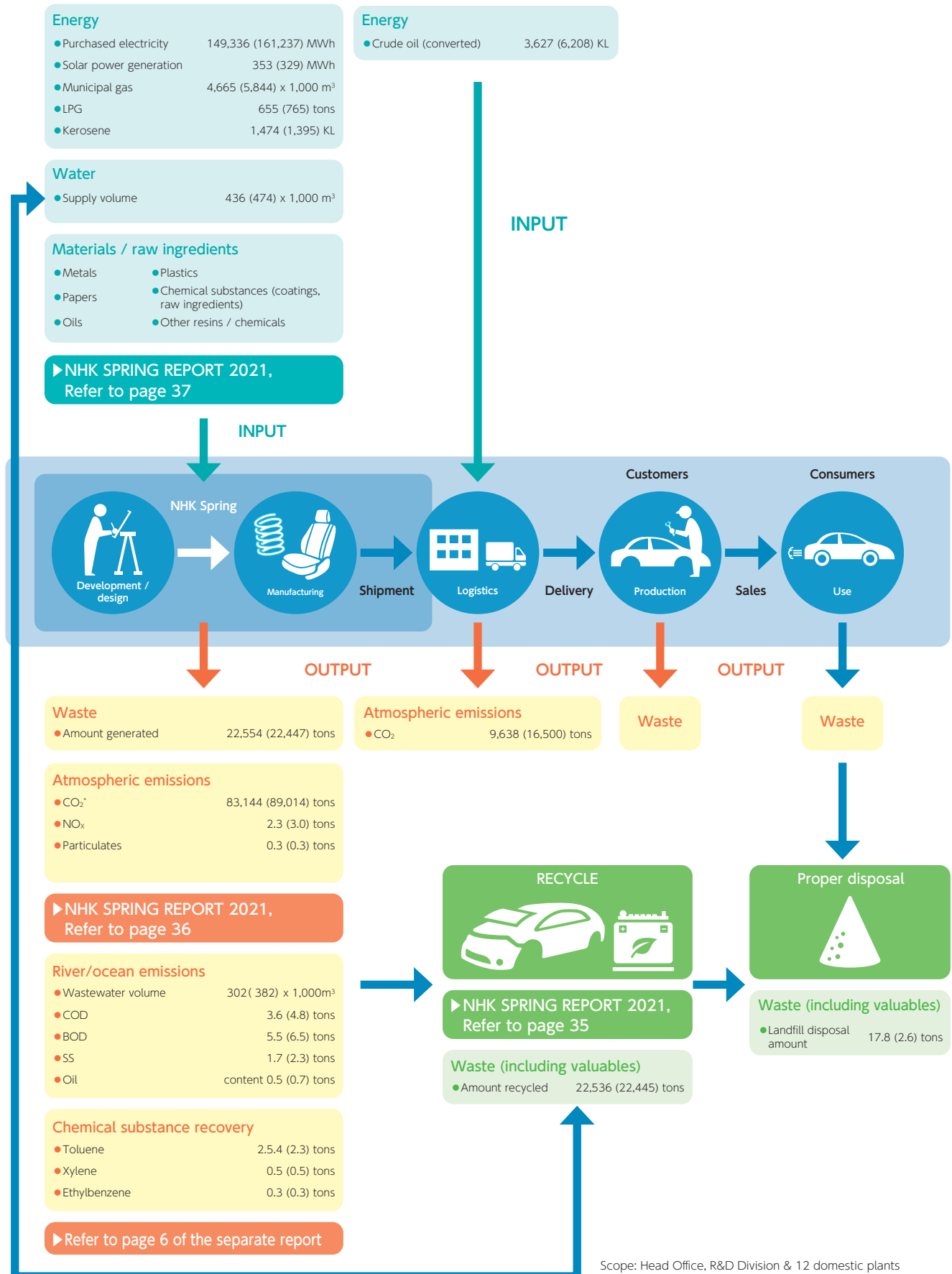


Business Activities and Life-cycle Flow

We are working to reduce the environmental impact of our business by taking a lifecycle view of the entire business and quantifying inputs and outputs as much as possible. We also aim to realize a recycling-oriented society by recycling waste.



Scope: Head Office, R&D Division & 12 domestic plants
 Figures in parenthesis () indicate FY2019 results.
 Note: CO₂ emission rate of electricity is 0.453 tons / 1,000 kWh